

DEAL POST TEST 2019-20 - SCHOOL REPORT CARD

PONDY
DIS Z1

34020100601 **GPS-PUDHUPALAYAM**

All Grades represent the following scorings in % *

GRADE A - >75	* School Status Grade represents the total enrollment of the school (Not %)
GRADE B - 51 TO 75	
GRADE C - 26 TO 50	
GRADE D - 10 TO 25	
GRADE E - <10	

Note: The Values given in the brackets denote the difference between the Pre and Post Test Scores.
(For Example: If the Pre-Test Grade is 'C' and the Post-Test Grade is 'A', then the progress is +2)

SCHOOL GRADE - CA

Status Gr. C (0) Performance Gr. A(+2)

OVERALL PERFORMANCE GRADES

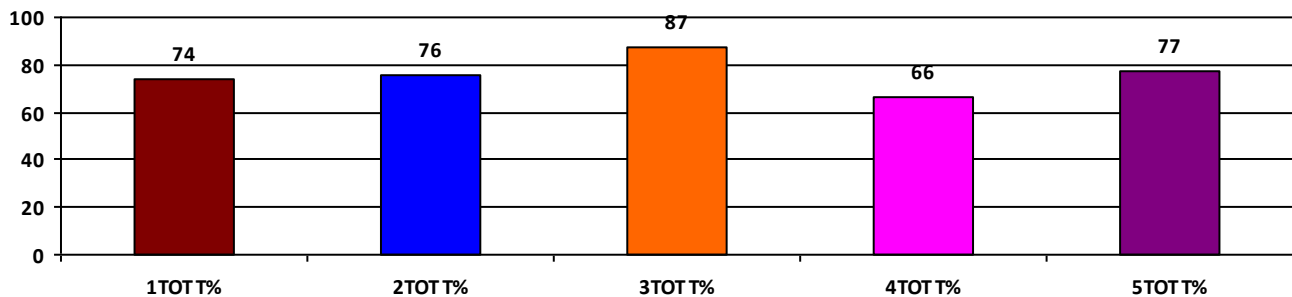
	Boys	Girls	Total
SCHOOL GR.	A	A	A
Diff. to Pre-Test	(+2)	(+2)	(+2)
DIST. GR.	B	B	B
STATE GR.	B	B	B

CLASSWISE APPEARED

DETAILS	I STD	II STD	III STD	IV STD	V STD
BOYS	6	6	7	2	3
GIRLS	2	2	3	4	2
TOTAL	8	8	10	6	5
Diff. to Pre-Test	(+1)	(-1)	(0)	(-1)	(0)

CLASSWISE PERFORMANCE GRADES (% of marks)

DETAILS	I STD	II STD	III STD	IV STD	V STD
%	74	76	87	66	77
SCHOOL GR.	B	A	A	B	A
Diff. to Pre-Test	(0)	(+2)	(+1)	(+1)	(+1)
DIST. GR.	A	B	B	B	B
STATE GR.	A	B	B	B	B



GRADEWISE PERFORMANCE (NO. OF STUDENTS)

ENGLISH	1 Std	2 Std	3 Std	4 Std	5 Std	TAMIL	1 Std	2 Std	3 Std	4 Std	5 Std
GR. A	4	4	8	1	2	GR. A	5	6	7	3	5
GR. B	1	2	2	2	2	GR. B	3	0	3	3	0
GR. C	3	2	0	2	1	GR. C	0	2	0	0	0
GR. D	0	0	0	1	0	GR. D	0	0	0	0	0
GR. E	0	0	0	0	0	GR. E	0	0	0	0	0

DEAL POST TEST 2019-20 - SCHOOL REPORT CARD

PONDY
DIS Z1

34020101001 **GPS-ALANKUPPAM**

All Grades represent the following scorings in % *

GRADE A - >75	* School Status Grade represents the total enrollment of the school (Not %)
GRADE B - 51 TO 75	
GRADE C - 26 TO 50	
GRADE D - 10 TO 25	
GRADE E - <10	

Note: The Values given in the brackets denote the difference between the Pre and Post Test Scores.
(For Example: If the Pre-Test Grade is 'C' and the Post-Test Grade is 'A', then the progress is +2)

SCHOOL GRADE - AB

Status Gr. A (0) Performance Gr. B(+1)

OVERALL PERFORMANCE GRADES

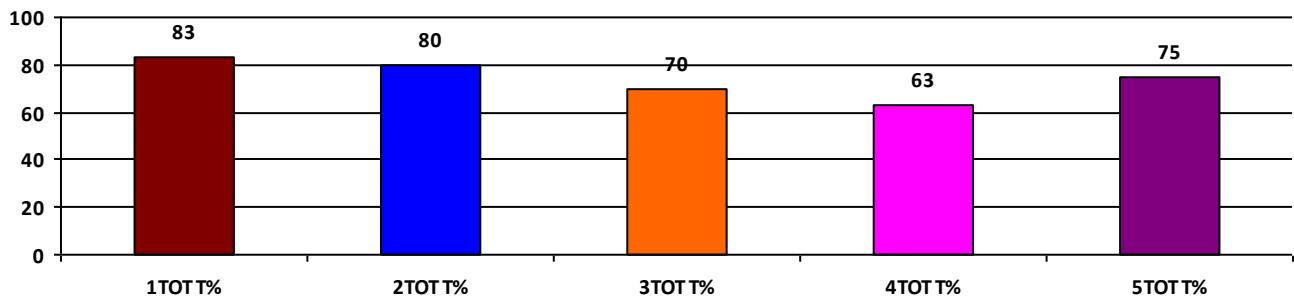
	Boys	Girls	Total
SCHOOL GR.	B	B	B
Diff. to Pre-Test	(+1)	(+1)	(+1)
DIST. GR.	B	B	B
STATE GR.	B	B	B

CLASSWISE APPEARED

DETAILS	I STD	II STD	III STD	IV STD	V STD
BOYS	10	9	5	11	10
GIRLS	4	12	12	12	13
TOTAL	14	21	17	23	23
Diff. to Pre-Test	(0)	(0)	(+1)	(-3)	(-1)

CLASSWISE PERFORMANCE GRADES (% of marks)

DETAILS	I STD	II STD	III STD	IV STD	V STD
%	83	80	70	63	75
SCHOOL GR.	A	A	B	B	B
Diff. to Pre-Test	(+1)	(+2)	(+1)	(+1)	(0)
DIST. GR.	A	B	B	B	B
STATE GR.	A	B	B	B	B



GRADEWISE PERFORMANCE (NO. OF STUDENTS)

ENGLISH	1 Std	2 Std	3 Std	4 Std	5 Std	TAMIL	1 Std	2 Std	3 Std	4 Std	5 Std
GR. A	9	14	6	3	14	GR. A	12	14	9	8	14
GR. B	5	7	9	10	6	GR. B	2	3	6	14	6
GR. C	0	0	2	10	0	GR. C	0	4	2	1	1
GR. D	0	0	0	0	3	GR. D	0	0	0	0	2
GR. E	0	0	0	0	0	GR. E	0	0	0	0	0

DEAL POST TEST 2019-20 - SCHOOL REPORT CARD

PONDY
DIS Z1

34020101005 **GPS-SANJEEVIRAYANPET**

All Grades represent the following scorings in % *

GRADE A - >75	
GRADE B - 51 TO 75	* School Status Grade
GRADE C - 26 TO 50	represents the total
GRADE D - 10 TO 25	enrollment of the
GRADE E - <10	school (Not %)

Note: The Values given in the brackets denote the difference between the Pre and Post Test Scores.
(For Example: If the Pre-Test Grade is 'C' and the Post-Test Grade is 'A', then the progress is +2)

SCHOOL GRADE - BB

Status Gr. B (0) Performance Gr. B (0)

OVERALL PERFORMANCE GRADES

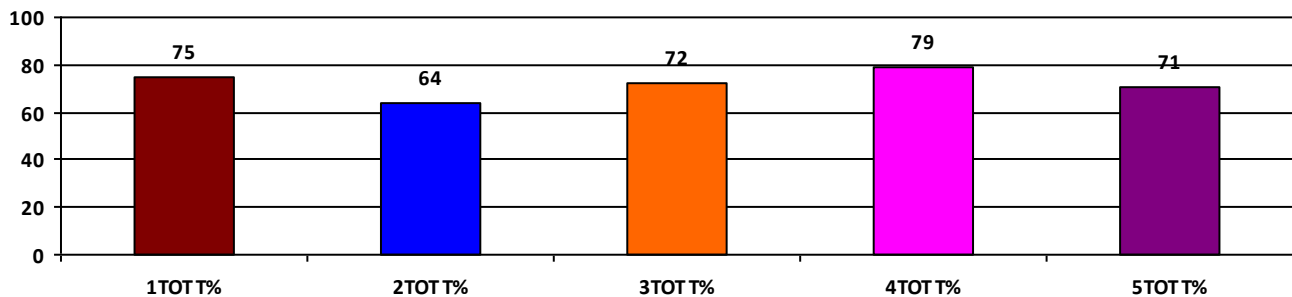
	Boys	Girls	Total
SCHOOL GR.	B	A	B
Diff. to Pre-Test	(+1)	(+1)	(0)
DIST. GR.	B	B	B
STATE GR.	B	B	B

CLASSWISE APPEARED

DETAILS	I STD	II STD	III STD	IV STD	V STD
BOYS	5	7	6	4	7
GIRLS	5	2	9	5	6
TOTAL	10	9	15	9	13
Diff. to Pre-Test	(+4)	(0)	(+2)	(0)	(0)

CLASSWISE PERFORMANCE GRADES (% of marks)

DETAILS	I STD	II STD	III STD	IV STD	V STD
%	75	64	72	79	71
SCHOOL GR.	B	B	B	A	B
Diff. to Pre-Test	(0)	(+1)	(0)	(+1)	(0)
DIST. GR.	A	B	B	B	B
STATE GR.	A	B	B	B	B



GRADEWISE PERFORMANCE (NO. OF STUDENTS)

ENGLISH	1 Std	2 Std	3 Std	4 Std	5 Std	TAMIL	1 Std	2 Std	3 Std	4 Std	5 Std
GR. A	2	0	6	1	4	GR. A	8	6	9	9	7
GR. B	7	4	4	6	7	GR. B	2	2	5	0	4
GR. C	1	4	4	2	1	GR. C	0	1	1	0	1
GR. D	0	1	1	0	1	GR. D	0	0	0	0	1
GR. E	0	0	0	0	0	GR. E	0	0	0	0	0

DEAL POST TEST 2019-20 - SCHOOL REPORT CARD

PONDY
DIS Z1

34020101501 **GPS-KALAPET**

All Grades represent the following scorings in % *

GRADE A - >75	
GRADE B - 51 TO 75	* School Status Grade
GRADE C - 26 TO 50	represents the total
GRADE D - 10 TO 25	enrollment of the
GRADE E - <10	school (Not %)

Note: The Values given in the brackets denote the difference between the Pre and Post Test Scores.
(For Example: If the Pre-Test Grade is 'C' and the Post-Test Grade is 'A', then the progress is +2)

SCHOOL GRADE - AB

Status Gr. A (0)	Performance Gr. B(+1)
------------------	-----------------------

OVERALL PERFORMANCE GRADES

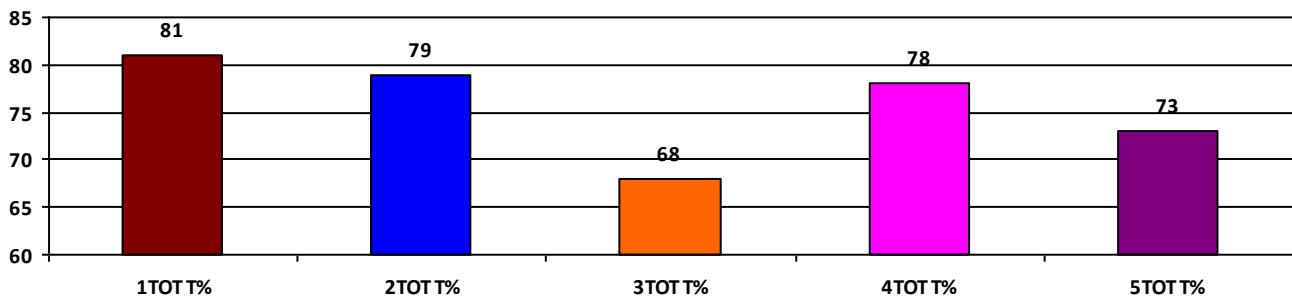
	Boys	Girls	Total
SCHOOL GR.	B	A	B
Diff. to Pre-Test	(+1)	(+1)	(+1)
DIST. GR.	B	B	B
STATE GR.	B	B	B

CLASSWISE APPEARED

DETAILS	I STD	II STD	III STD	IV STD	V STD
BOYS	15	23	25	18	16
GIRLS	18	24	23	25	39
TOTAL	33	47	48	43	55
Diff. to Pre-Test	(-1)	(-1)	(-3)	(+3)	(-2)

CLASSWISE PERFORMANCE GRADES (% of marks)

DETAILS	I STD	II STD	III STD	IV STD	V STD
%	81	79	68	78	73
SCHOOL GR.	A	A	B	A	B
Diff. to Pre-Test	(+1)	(+2)	(+1)	(+1)	(0)
DIST. GR.	A	B	B	B	B
STATE GR.	A	B	B	B	B



GRADEWISE PERFORMANCE (NO. OF STUDENTS)

ENGLISH	1 Std	2 Std	3 Std	4 Std	5 Std	TAMIL	1 Std	2 Std	3 Std	4 Std	5 Std
GR. A	21	29	12	25	31	GR. A	17	33	26	34	31
GR. B	12	10	21	12	14	GR. B	16	8	16	5	16
GR. C	0	8	13	5	8	GR. C	0	5	5	3	5
GR. D	0	0	2	1	1	GR. D	0	1	1	1	2
GR. E	0	0	0	0	1	GR. E	0	0	0	0	1

DEAL POST TEST 2019-20 - SCHOOL REPORT CARD

PONDY
DIS Z1

34020101508 **GPS-GANAPATHYCHETTIKULAM**

All Grades represent the following scorings in % *

GRADE A - >75	* School Status Grade represents the total enrollment of the school (Not %)
GRADE B - 51 TO 75	
GRADE C - 26 TO 50	
GRADE D - 10 TO 25	
GRADE E - <10	

Note: The Values given in the brackets denote the difference between the Pre and Post Test Scores.
(For Example: If the Pre-Test Grade is 'C' and the Post-Test Grade is 'A', then the progress is +2)

SCHOOL GRADE - AA

Status Gr. A (0)	Performance Gr. A(+1)
------------------	-----------------------

OVERALL PERFORMANCE GRADES

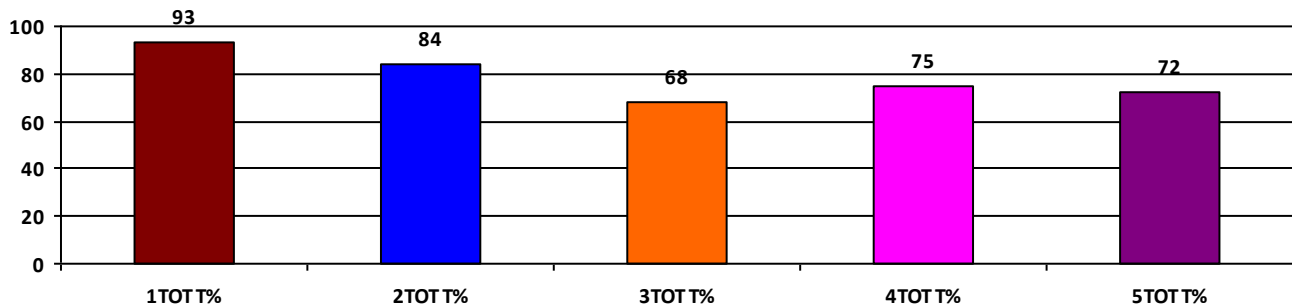
	Boys	Girls	Total
SCHOOL GR.	B	A	A
Diff. to Pre-Test	(0)	(+1)	(+1)
DIST. GR.	B	B	B
STATE GR.	B	B	B

CLASSWISE APPEARED

DETAILS	I STD	II STD	III STD	IV STD	V STD
BOYS	7	9	21	11	9
GIRLS	8	7	4	11	8
TOTAL	15	16	25	22	17
Diff. to Pre-Test	(-1)	(-2)	(+1)	(-2)	(0)

CLASSWISE PERFORMANCE GRADES (% of marks)

DETAILS	I STD	II STD	III STD	IV STD	V STD
%	93	84	68	75	72
SCHOOL GR.	A	A	B	B	B
Diff. to Pre-Test	(0)	(+1)	(0)	(0)	(+1)
DIST. GR.	A	B	B	B	B
STATE GR.	A	B	B	B	B



GRADEWISE PERFORMANCE (NO. OF STUDENTS)

ENGLISH	1 Std	2 Std	3 Std	4 Std	5 Std	TAMIL	1 Std	2 Std	3 Std	4 Std	5 Std
GR. A	14	8	4	4	6	GR. A	14	14	15	18	11
GR. B	1	8	14	14	10	GR. B	1	1	6	1	4
GR. C	0	0	6	4	0	GR. C	0	1	4	3	2
GR. D	0	0	1	0	1	GR. D	0	0	0	0	0
GR. E	0	0	0	0	0	GR. E	0	0	0	0	0

DEAL POST TEST 2019-20 - SCHOOL REPORT CARD

PONDY
DIS Z1

34020101510 **GPS-KALAPET KUPPAM**

All Grades represent the following scorings in % *

GRADE A - >75	* School Status Grade represents the total enrollment of the school (Not %)
GRADE B - 51 TO 75	
GRADE C - 26 TO 50	
GRADE D - 10 TO 25	
GRADE E - <10	

Note: The Values given in the brackets denote the difference between the Pre and Post Test Scores.
(For Example: If the Pre-Test Grade is 'C' and the Post-Test Grade is 'A', then the progress is +2)

SCHOOL GRADE - AA

Status Gr. A (0) Performance Gr. A(+2)

OVERALL PERFORMANCE GRADES

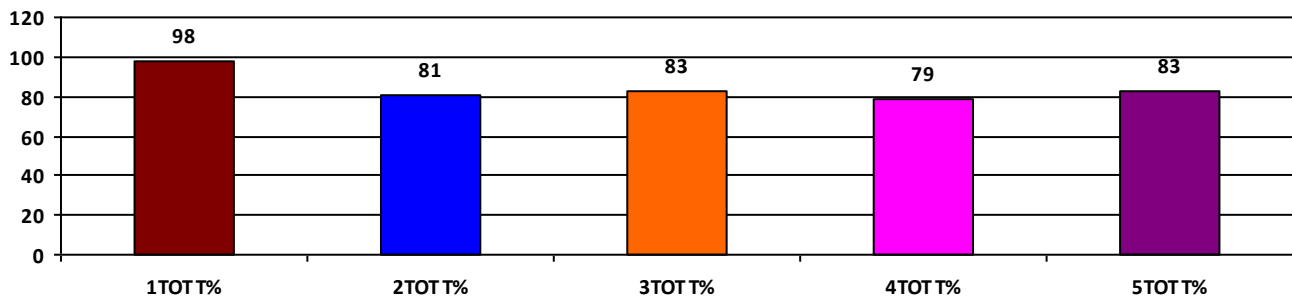
	Boys	Girls	Total
SCHOOL GR.	A	A	A
Diff. to Pre-Test	(+2)	(+2)	(+2)
DIST. GR.	B	B	B
STATE GR.	B	B	B

CLASSWISE APPEARED

DETAILS	I STD	II STD	III STD	IV STD	V STD
BOYS	7	1	5	8	6
GIRLS	5	11	10	9	12
TOTAL	12	12	15	17	18
Diff. to Pre-Test	(+2)	(+1)	(-1)	(-2)	(0)

CLASSWISE PERFORMANCE GRADES (% of marks)

DETAILS	I STD	II STD	III STD	IV STD	V STD
%	98	81	83	79	83
SCHOOL GR.	A	A	A	A	A
Diff. to Pre-Test	(+1)	(+2)	(+3)	(+2)	(+2)
DIST. GR.	A	B	B	B	B
STATE GR.	A	B	B	B	B



GRADEWISE PERFORMANCE (NO. OF STUDENTS)

ENGLISH	1 Std	2 Std	3 Std	4 Std	5 Std	TAMIL	1 Std	2 Std	3 Std	4 Std	5 Std
GR. A	12	6	9	8	16	GR. A	11	11	10	12	13
GR. B	0	5	6	8	1	GR. B	1	1	5	5	2
GR. C	0	1	0	1	1	GR. C	0	0	0	0	2
GR. D	0	0	0	0	0	GR. D	0	0	0	0	1
GR. E	0	0	0	0	0	GR. E	0	0	0	0	0

DEAL POST TEST 2019-20 - SCHOOL REPORT CARD

PONDY
DIS Z1

34020101601 **GPS-KARUVADIKUPPAM**

All Grades represent the following scorings in % *

GRADE A - >75	
GRADE B - 51 TO 75	* School Status Grade
GRADE C - 26 TO 50	represents the total
GRADE D - 10 TO 25	enrollment of the
GRADE E - <10	school (Not %)

Note: The Values given in the brackets denote the difference between the Pre and Post Test Scores.
(For Example: If the Pre-Test Grade is 'C' and the Post-Test Grade is 'A', then the progress is +2)

SCHOOL GRADE - AA

Status Gr. A (0) Performance Gr. A(+1)

OVERALL PERFORMANCE GRADES

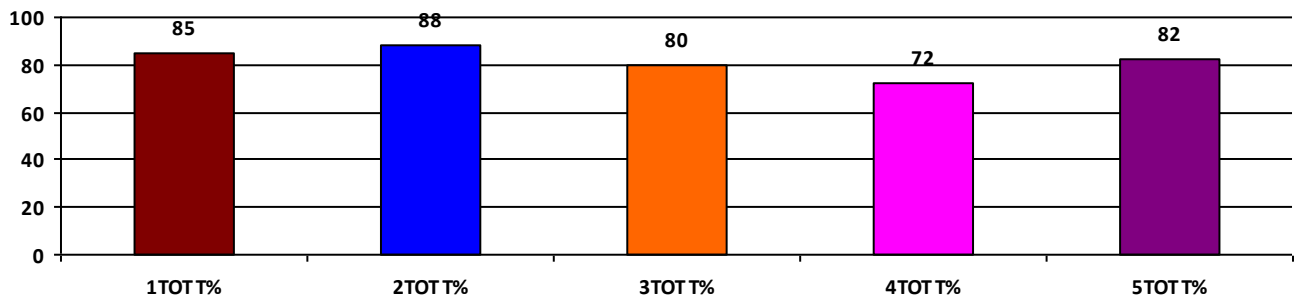
	Boys	Girls	Total
SCHOOL GR.	A	A	A
Diff. to Pre-Test	(+1)	(+1)	(+1)
DIST. GR.	B	B	B
STATE GR.	B	B	B

CLASSWISE APPEARED

DETAILS	I STD	II STD	III STD	IV STD	V STD
BOYS	13	7	11	19	12
GIRLS	7	16	10	13	7
TOTAL	20	23	21	32	19
Diff. to Pre-Test	(+2)	(0)	(0)	(-1)	(-1)

CLASSWISE PERFORMANCE GRADES (% of marks)

DETAILS	I STD	II STD	III STD	IV STD	V STD
%	85	88	80	72	82
SCHOOL GR.	A	A	A	B	A
Diff. to Pre-Test	(0)	(+1)	(+1)	(0)	(+1)
DIST. GR.	A	B	B	B	B
STATE GR.	A	B	B	B	B



GRADEWISE PERFORMANCE (NO. OF STUDENTS)

ENGLISH	1 Std	2 Std	3 Std	4 Std	5 Std	TAMIL	1 Std	2 Std	3 Std	4 Std	5 Std
GR. A	14	20	12	16	14	GR. A	16	21	14	24	12
GR. B	6	2	7	11	5	GR. B	4	1	6	4	6
GR. C	0	1	2	1	0	GR. C	0	0	1	0	1
GR. D	0	0	0	3	0	GR. D	0	1	0	2	0
GR. E	0	0	0	1	0	GR. E	0	0	0	2	0

DEAL POST TEST 2019-20 - SCHOOL REPORT CARD

PONDY
DIS Z1

34020101603 **GPS-NAVARKULAM**

All Grades represent the following scorings in % *

GRADE A - >75	* School Status Grade represents the total enrollment of the school (Not %)
GRADE B - 51 TO 75	
GRADE C - 26 TO 50	
GRADE D - 10 TO 25	
GRADE E - <10	

Note: The Values given in the brackets denote the difference between the Pre and Post Test Scores.
(For Example: If the Pre-Test Grade is 'C' and the Post-Test Grade is 'A', then the progress is +2)

SCHOOL GRADE - AA

Status Gr. A (0) Performance Gr. A(+1)

OVERALL PERFORMANCE GRADES

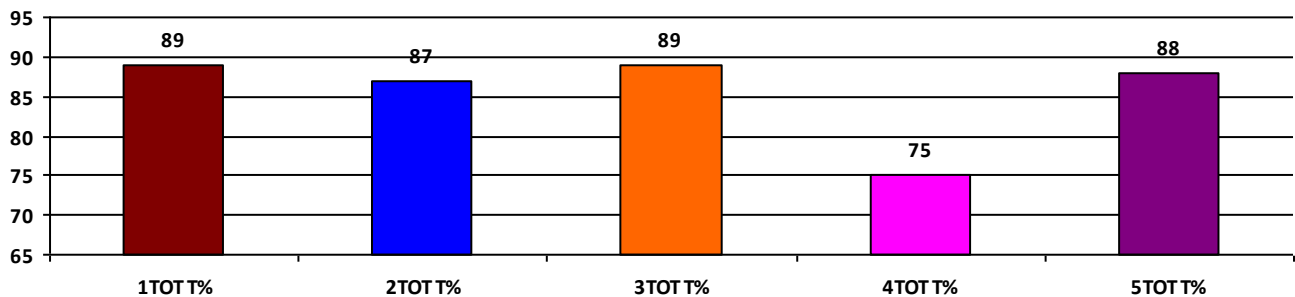
	Boys	Girls	Total
SCHOOL GR.	A	A	A
Diff. to Pre-Test	(+1)	(+1)	(+1)
DIST. GR.	B	B	B
STATE GR.	B	B	B

CLASSWISE APPEARED

DETAILS	I STD	II STD	III STD	IV STD	V STD
BOYS	16	10	17	13	17
GIRLS	9	10	10	9	10
TOTAL	25	20	27	22	27
Diff. to Pre-Test	(+1)	(+1)	(-1)	(+1)	(+1)

CLASSWISE PERFORMANCE GRADES (% of marks)

DETAILS	I STD	II STD	III STD	IV STD	V STD
%	89	87	89	75	88
SCHOOL GR.	A	A	A	B	A
Diff. to Pre-Test	(+1)	(+1)	(+1)	(0)	(+1)
DIST. GR.	A	B	B	B	B
STATE GR.	A	B	B	B	B



GRADEWISE PERFORMANCE (NO. OF STUDENTS)

ENGLISH	1 Std	2 Std	3 Std	4 Std	5 Std	TAMIL	1 Std	2 Std	3 Std	4 Std	5 Std
GR. A	21	18	23	10	22	GR. A	22	15	25	17	24
GR. B	3	2	3	8	3	GR. B	2	4	1	3	1
GR. C	1	0	1	3	2	GR. C	1	1	1	0	2
GR. D	0	0	0	0	0	GR. D	0	0	0	1	0
GR. E	0	0	0	1	0	GR. E	0	0	0	1	0

DEAL POST TEST 2019-20 - SCHOOL REPORT CARD

PONDY
DIS Z1

34020101605 **GPS-PETICHETPET**

All Grades represent the following scorings in % *

GRADE A - >75	* School Status Grade represents the total enrollment of the school (Not %)
GRADE B - 51 TO 75	
GRADE C - 26 TO 50	
GRADE D - 10 TO 25	
GRADE E - <10	

Note: The Values given in the brackets denote the difference between the Pre and Post Test Scores.
(For Example: If the Pre-Test Grade is 'C' and the Post-Test Grade is 'A', then the progress is +2)

SCHOOL GRADE - AB

Status Gr. A (0)	Performance Gr. B(+1)
------------------	-----------------------

OVERALL PERFORMANCE GRADES

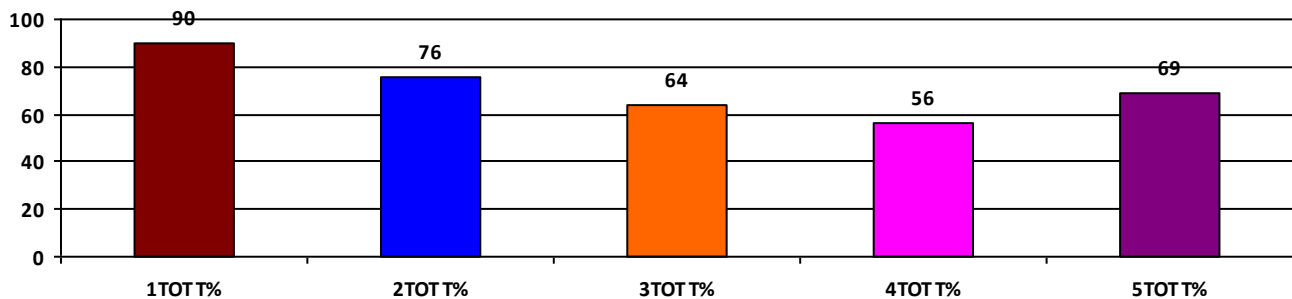
	Boys	Girls	Total
SCHOOL GR.	B	B	B
Diff. to Pre-Test	(+1)	(+1)	(+1)
DIST. GR.	B	B	B
STATE GR.	B	B	B

CLASSWISE APPEARED

DETAILS	I STD	II STD	III STD	IV STD	V STD
BOYS	10	14	13	23	26
GIRLS	10	13	18	25	18
TOTAL	20	27	31	48	44
Diff. to Pre-Test	(-2)	(-1)	(-1)	(0)	(0)

CLASSWISE PERFORMANCE GRADES (% of marks)

DETAILS	I STD	II STD	III STD	IV STD	V STD
%	90	76	64	56	69
SCHOOL GR.	A	A	B	B	B
Diff. to Pre-Test	(+1)	(+1)	(+1)	(+1)	(+1)
DIST. GR.	A	B	B	B	B
STATE GR.	A	B	B	B	B



GRADEWISE PERFORMANCE (NO. OF STUDENTS)

ENGLISH	1 Std	2 Std	3 Std	4 Std	5 Std	TAMIL	1 Std	2 Std	3 Std	4 Std	5 Std
GR. A	19	16	9	14	22	GR. A	19	17	13	17	19
GR. B	0	9	12	12	12	GR. B	0	7	12	14	19
GR. C	1	1	8	11	7	GR. C	1	1	4	9	3
GR. D	0	1	0	5	3	GR. D	0	2	0	5	3
GR. E	0	0	2	6	0	GR. E	0	0	2	3	0

DEAL POST TEST 2019-20 - SCHOOL REPORT CARD

PONDY
DIS Z1

34020102301 **GPS-SARAM**

All Grades represent the following scorings in % *

GRADE A - >75	
GRADE B - 51 TO 75	* School Status Grade
GRADE C - 26 TO 50	represents the total
GRADE D - 10 TO 25	enrollment of the
GRADE E - <10	school (Not %)

Note: The Values given in the brackets denote the difference between the Pre and Post Test Scores.
(For Example: If the Pre-Test Grade is 'C' and the Post-Test Grade is 'A', then the progress is +2)

SCHOOL GRADE - BB

Status Gr. B (0) Performance Gr. B (0)

OVERALL PERFORMANCE GRADES

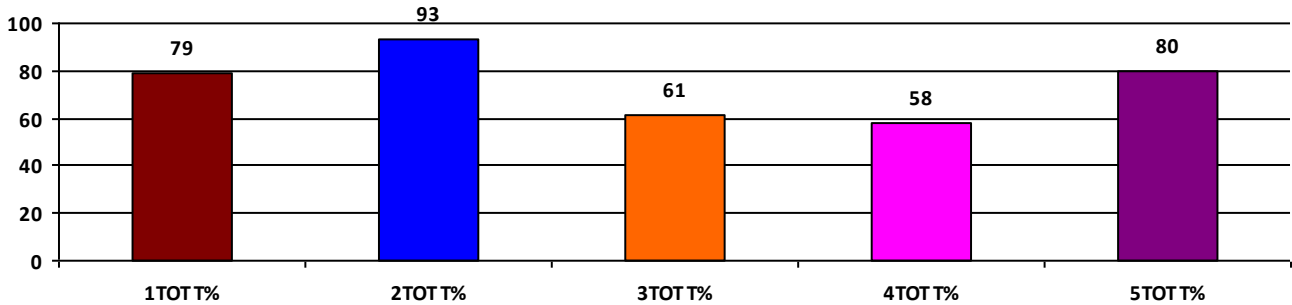
	Boys	Girls	Total
SCHOOL GR.	B	A	B
Diff. to Pre-Test	(0)	(+1)	(0)
DIST. GR.	B	B	B
STATE GR.	B	B	B

CLASSWISE APPEARED

DETAILS	I STD	II STD	III STD	IV STD	V STD
BOYS	3	12	7	5	8
GIRLS	4	7	5	10	6
TOTAL	7	19	12	15	14
Diff. to Pre-Test	(-1)	(+1)	(-2)	(0)	(0)

CLASSWISE PERFORMANCE GRADES (% of marks)

DETAILS	I STD	II STD	III STD	IV STD	V STD
%	79	93	61	58	80
SCHOOL GR.	A	A	B	B	A
Diff. to Pre-Test	(+1)	(+1)	(0)	(0)	(+1)
DIST. GR.	A	B	B	B	B
STATE GR.	A	B	B	B	B



GRADEWISE PERFORMANCE (NO. OF STUDENTS)

ENGLISH	1 Std	2 Std	3 Std	4 Std	5 Std	TAMIL	1 Std	2 Std	3 Std	4 Std	5 Std
GR. A	5	19	3	5	10	GR. A	5	18	6	6	10
GR. B	0	0	5	4	1	GR. B	2	1	0	5	3
GR. C	2	0	3	2	3	GR. C	0	0	5	1	1
GR. D	0	0	0	4	0	GR. D	0	0	0	3	0
GR. E	0	0	1	0	0	GR. E	0	0	1	0	0

DEAL POST TEST 2019-20 - SCHOOL REPORT CARD

PONDY
DIS Z1

34020102305 GPS-JEEVANADAPURAM

All Grades represent the following scorings in % *

GRADE A - >75	
GRADE B - 51 TO 75	* School Status Grade
GRADE C - 26 TO 50	represents the total
GRADE D - 10 TO 25	enrollment of the
GRADE E - <10	school (Not %)

Note: The Values given in the brackets denote the difference between the Pre and Post Test Scores.
(For Example: If the Pre-Test Grade is 'C' and the Post-Test Grade is 'A', then the progress is +2)

SCHOOL GRADE - DA

Status Gr. D (0) Performance Gr. A(+1)

OVERALL PERFORMANCE GRADES

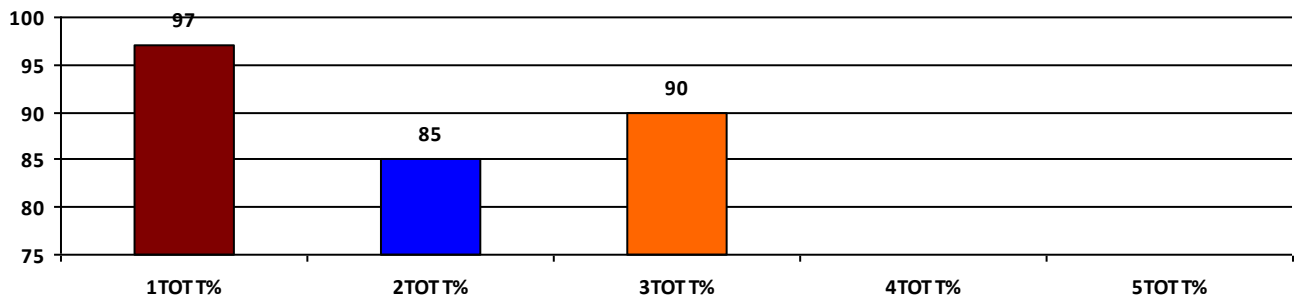
	Boys	Girls	Total
SCHOOL GR.	A	A	A
Diff. to Pre-Test	(+1)	(+2)	(+1)
DIST. GR.	B	B	B
STATE GR.	B	B	B

CLASSWISE APPEARED

DETAILS	I STD	II STD	III STD	IV STD	V STD
BOYS	1	3	2	0	0
GIRLS	4	4	3	0	0
TOTAL	5	7	5	0	0
Diff. to Pre-Test	(-1)	(0)	(0)	(0)	(0)

CLASSWISE PERFORMANCE GRADES (% of marks)

DETAILS	I STD	II STD	III STD	IV STD	V STD
%	97	85	90	NA	NA
SCHOOL GR.	A	A	A	NA	NA
Diff. to Pre-Test	(+1)	(+2)	(+1)	(+8)	(+8)
DIST. GR.	A	B	B	B	B
STATE GR.	A	B	B	B	B



GRADEWISE PERFORMANCE (NO. OF STUDENTS)

ENGLISH	1 Std	2 Std	3 Std	4 Std	5 Std	TAMIL	1 Std	2 Std	3 Std	4 Std	5 Std
GR. A	5	6	4	0	0	GR. A	5	6	4	0	0
GR. B	0	0	1	0	0	GR. B	0	0	1	0	0
GR. C	0	1	0	0	0	GR. C	0	1	0	0	0
GR. D	0	0	0	0	0	GR. D	0	0	0	0	0
GR. E	0	0	0	0	0	GR. E	0	0	0	0	0

DEAL POST TEST 2019-20 - SCHOOL REPORT CARD

PONDY
DIS Z1

34020102306 GPS-SINNAIYANPET

All Grades represent the following scorings in % *

GRADE A - >75	
GRADE B - 51 TO 75	* School Status Grade
GRADE C - 26 TO 50	represents the total
GRADE D - 10 TO 25	enrollment of the
GRADE E - <10	school (Not %)

Note: The Values given in the brackets denote the difference between the Pre and Post Test Scores.
(For Example: If the Pre-Test Grade is 'C' and the Post-Test Grade is 'A', then the progress is +2)

SCHOOL GRADE - DB

Status Gr. D (0)	Performance Gr. B (0)
------------------	-----------------------

OVERALL PERFORMANCE GRADES

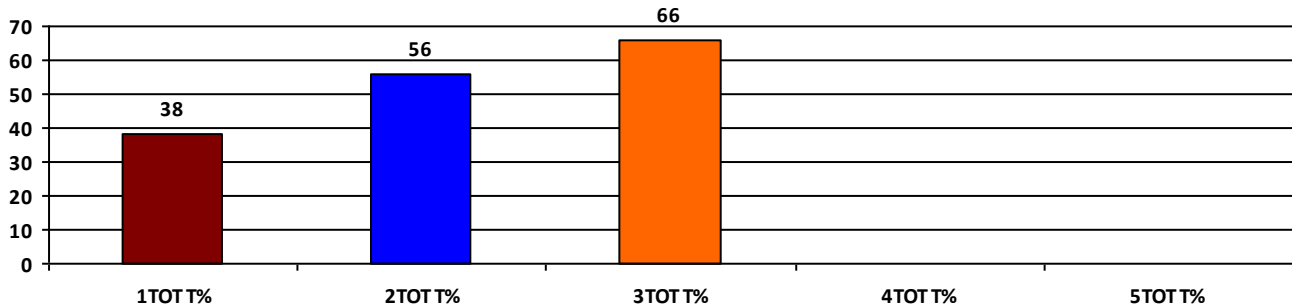
	Boys	Girls	Total
SCHOOL GR.	B	B	B
Diff. to Pre-Test	(0)	(0)	(0)
DIST. GR.	B	B	B
STATE GR.	B	B	B

CLASSWISE APPEARED

DETAILS	I STD	II STD	III STD	IV STD	V STD
BOYS	2	3	4	0	0
GIRLS	7	1	3	0	0
TOTAL	9	4	7	0	0
Diff. to Pre-Test	(0)	(0)	(0)	(0)	(0)

CLASSWISE PERFORMANCE GRADES (% of marks)

DETAILS	I STD	II STD	III STD	IV STD	V STD
%	38	56	66	NA	NA
SCHOOL GR.	C	B	B	NA	NA
Diff. to Pre-Test	(-1)	(0)	(0)	(+8)	(+8)
DIST. GR.	A	B	B	B	B
STATE GR.	A	B	B	B	B



GRADEWISE PERFORMANCE (NO. OF STUDENTS)

ENGLISH	1 Std	2 Std	3 Std	4 Std	5 Std	TAMIL	1 Std	2 Std	3 Std	4 Std	5 Std
GR. A	2	2	3	0	0	GR. A	0	2	1	0	0
GR. B	0	0	2	0	0	GR. B	4	0	6	0	0
GR. C	2	0	2	0	0	GR. C	3	1	0	0	0
GR. D	3	2	0	0	0	GR. D	1	1	0	0	0
GR. E	2	0	0	0	0	GR. E	1	0	0	0	0

DEAL POST TEST 2019-20 - SCHOOL REPORT CARD

PONDY
DIS Z1

34020102502 **GPS THATTANCHAVADY**

All Grades represent the following scorings in % *

GRADE A - >75	
GRADE B - 51 TO 75	* School Status Grade
GRADE C - 26 TO 50	represents the total
GRADE D - 10 TO 25	enrollment of the
GRADE E - <10	school (Not %)

Note: The Values given in the brackets denote the difference between the Pre and Post Test Scores.
(For Example: If the Pre-Test Grade is 'C' and the Post-Test Grade is 'A', then the progress is +2)

SCHOOL GRADE - AA

Status Gr. A (0)	Performance Gr. A(+1)
------------------	-----------------------

OVERALL PERFORMANCE GRADES

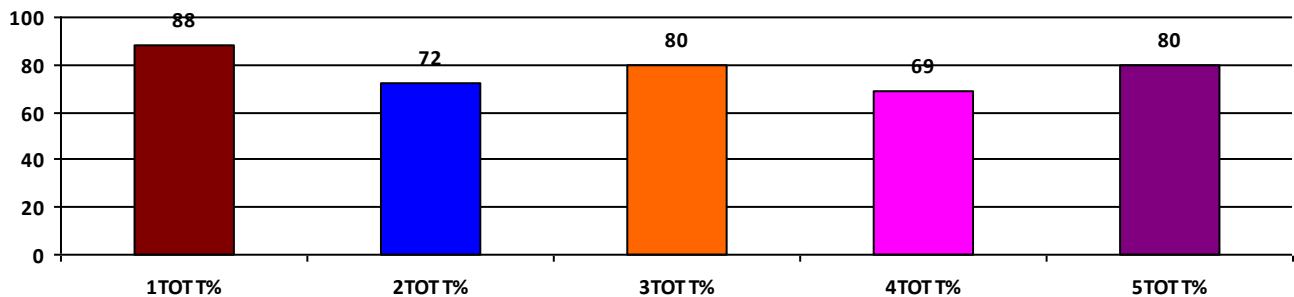
	Boys	Girls	Total
SCHOOL GR.	B	A	A
Diff. to Pre-Test	(+1)	(+1)	(+1)
DIST. GR.	B	B	B
STATE GR.	B	B	B

CLASSWISE APPEARED

DETAILS	I STD	II STD	III STD	IV STD	V STD
BOYS	12	15	11	22	26
GIRLS	20	10	29	26	17
TOTAL	32	25	40	48	43
Diff. to Pre-Test	(-1)	(-2)	(+2)	(0)	(+1)

CLASSWISE PERFORMANCE GRADES (% of marks)

DETAILS	I STD	II STD	III STD	IV STD	V STD
%	88	72	80	69	80
SCHOOL GR.	A	B	A	B	A
Diff. to Pre-Test	(+1)	(+1)	(+1)	(0)	(+2)
DIST. GR.	A	B	B	B	B
STATE GR.	A	B	B	B	B



GRADEWISE PERFORMANCE (NO. OF STUDENTS)

ENGLISH	1 Std	2 Std	3 Std	4 Std	5 Std	TAMIL	1 Std	2 Std	3 Std	4 Std	5 Std
GR. A	28	12	31	23	29	GR. A	27	19	28	26	32
GR. B	2	2	6	14	11	GR. B	4	2	7	15	9
GR. C	2	10	0	7	2	GR. C	1	2	3	3	1
GR. D	0	1	1	4	0	GR. D	0	2	0	4	0
GR. E	0	0	2	0	1	GR. E	0	0	2	0	1

DEAL POST TEST 2019-20 - SCHOOL REPORT CARD

PONDY
DIS Z1

34020107303 GPS-CHINNAKALAPET

All Grades represent the following scorings in % *

GRADE A - >75	
GRADE B - 51 TO 75	* School Status Grade
GRADE C - 26 TO 50	represents the total
GRADE D - 10 TO 25	enrollment of the
GRADE E - <10	school (Not %)

Note: The Values given in the brackets denote the difference between the Pre and Post Test Scores.
(For Example: If the Pre-Test Grade is 'C' and the Post-Test Grade is 'A', then the progress is +2)

SCHOOL GRADE - CB

Status Gr. C (0) Performance Gr. B(+1)

OVERALL PERFORMANCE GRADES

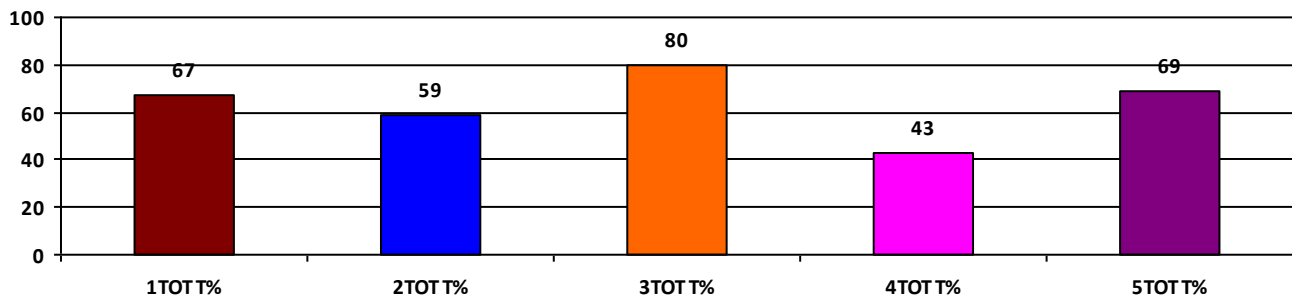
	Boys	Girls	Total
SCHOOL GR.	B	B	B
Diff. to Pre-Test	(+1)	(+1)	(+1)
DIST. GR.	B	B	B
STATE GR.	B	B	B

CLASSWISE APPEARED

DETAILS	I STD	II STD	III STD	IV STD	V STD
BOYS	1	2	3	5	4
GIRLS	3	4	3	4	6
TOTAL	4	6	6	9	10
Diff. to Pre-Test	(-3)	(0)	(-1)	(0)	(-1)

CLASSWISE PERFORMANCE GRADES (% of marks)

DETAILS	I STD	II STD	III STD	IV STD	V STD
%	67	59	80	43	69
SCHOOL GR.	B	B	A	C	B
Diff. to Pre-Test	(+1)	(+1)	(+2)	(0)	(+1)
DIST. GR.	A	B	B	B	B
STATE GR.	A	B	B	B	B



GRADEWISE PERFORMANCE (NO. OF STUDENTS)

ENGLISH	1 Std	2 Std	3 Std	4 Std	5 Std	TAMIL	1 Std	2 Std	3 Std	4 Std	5 Std
GR. A	0	0	3	0	3	GR. A	1	2	5	0	4
GR. B	3	3	3	4	4	GR. B	3	3	1	3	4
GR. C	1	2	0	4	3	GR. C	0	0	0	4	2
GR. D	0	1	0	1	0	GR. D	0	1	0	2	0
GR. E	0	0	0	0	0	GR. E	0	0	0	0	0

DEAL POST TEST 2019-20 - SCHOOL REPORT CARD

PONDY
DIS Z1

34020111107 GPS-PAKKAMUDAYANPET

All Grades represent the following scorings in % *

GRADE A - >75	* School Status Grade represents the total enrollment of the school (Not %)
GRADE B - 51 TO 75	
GRADE C - 26 TO 50	
GRADE D - 10 TO 25	
GRADE E - <10	

Note: The Values given in the brackets denote the difference between the Pre and Post Test Scores.
(For Example: If the Pre-Test Grade is 'C' and the Post-Test Grade is 'A', then the progress is +2)

SCHOOL GRADE - BA

Status Gr. B (0) Performance Gr. A(+1)

OVERALL PERFORMANCE GRADES

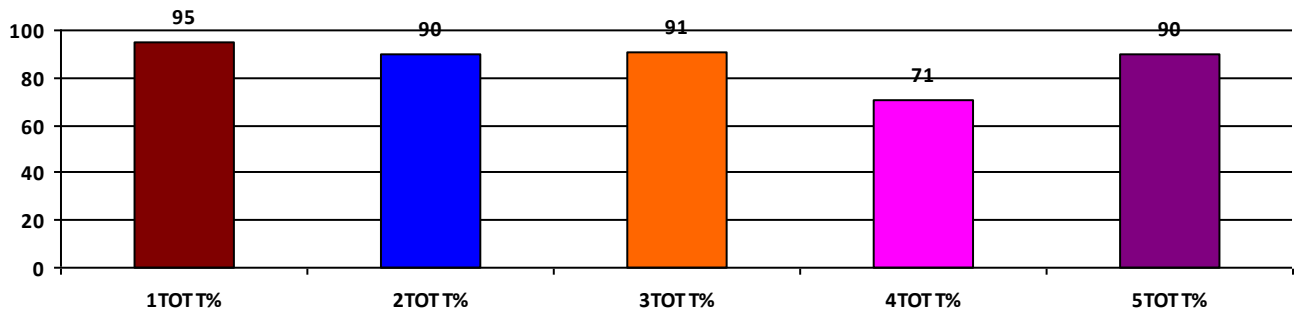
	Boys	Girls	Total
SCHOOL GR.	A	A	A
Diff. to Pre-Test	(+1)	(+1)	(+1)
DIST. GR.	B	B	B
STATE GR.	B	B	B

CLASSWISE APPEARED

DETAILS	I STD	II STD	III STD	IV STD	V STD
BOYS	6	4	8	6	10
GIRLS	1	6	6	10	5
TOTAL	7	10	14	16	15
Diff. to Pre-Test	(0)	(0)	(-1)	(0)	(-5)

CLASSWISE PERFORMANCE GRADES (% of marks)

DETAILS	I STD	II STD	III STD	IV STD	V STD
%	95	90	91	71	90
SCHOOL GR.	A	A	A	B	A
Diff. to Pre-Test	(+1)	(+2)	(+1)	(0)	(+2)
DIST. GR.	A	B	B	B	B
STATE GR.	A	B	B	B	B



GRADEWISE PERFORMANCE (NO. OF STUDENTS)

ENGLISH	1 Std	2 Std	3 Std	4 Std	5 Std	TAMIL	1 Std	2 Std	3 Std	4 Std	5 Std
GR. A	7	6	13	6	13	GR. A	7	10	13	11	14
GR. B	0	4	1	5	2	GR. B	0	0	1	3	1
GR. C	0	0	0	5	0	GR. C	0	0	0	2	0
GR. D	0	0	0	0	0	GR. D	0	0	0	0	0
GR. E	0	0	0	0	0	GR. E	0	0	0	0	0

DEAL POST TEST 2019-20 - SCHOOL REPORT CARD

PONDY
DIS Z1

34020112833 **GPS-SOLAI NAGAR**

All Grades represent the following scorings in % *

GRADE A - >75	* School Status Grade represents the total enrollment of the school (Not %)
GRADE B - 51 TO 75	
GRADE C - 26 TO 50	
GRADE D - 10 TO 25	
GRADE E - <10	

Note: The Values given in the brackets denote the difference between the Pre and Post Test Scores.
(For Example: If the Pre-Test Grade is 'C' and the Post-Test Grade is 'A', then the progress is +2)

SCHOOL GRADE - AA

Status Gr. A (0)	Performance Gr. A(+2)
------------------	-----------------------

OVERALL PERFORMANCE GRADES

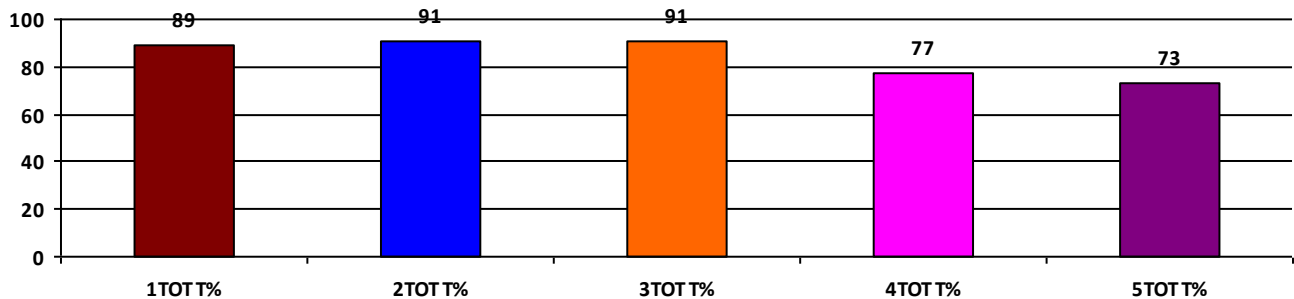
	Boys	Girls	Total
SCHOOL GR.	A	A	A
Diff. to Pre-Test	(+2)	(+2)	(+2)
DIST. GR.	B	B	B
STATE GR.	B	B	B

CLASSWISE APPEARED

DETAILS	I STD	II STD	III STD	IV STD	V STD
BOYS	14	7	10	7	19
GIRLS	10	4	10	7	10
TOTAL	24	11	20	14	29
Diff. to Pre-Test	(-1)	(0)	(0)	(0)	(+2)

CLASSWISE PERFORMANCE GRADES (% of marks)

DETAILS	I STD	II STD	III STD	IV STD	V STD
%	89	91	91	77	73
SCHOOL GR.	A	A	A	A	B
Diff. to Pre-Test	(+2)	(+2)	(+2)	(+2)	(+1)
DIST. GR.	A	B	B	B	B
STATE GR.	A	B	B	B	B



GRADEWISE PERFORMANCE (NO. OF STUDENTS)

ENGLISH	1 Std	2 Std	3 Std	4 Std	5 Std	TAMIL	1 Std	2 Std	3 Std	4 Std	5 Std
GR. A	19	10	16	6	13	GR. A	21	9	17	10	19
GR. B	5	1	4	5	12	GR. B	3	2	3	4	6
GR. C	0	0	0	3	3	GR. C	0	0	0	0	2
GR. D	0	0	0	0	1	GR. D	0	0	0	0	1
GR. E	0	0	0	0	0	GR. E	0	0	0	0	1

DEAL POST TEST 2019-20 - SCHOOL REPORT CARD

PONDY
DIS Z1

34020112834 **GPS-KURUSUKUPPAM**

All Grades represent the following scorings in % *

GRADE A - >75	* School Status Grade represents the total enrollment of the school (Not %)
GRADE B - 51 TO 75	
GRADE C - 26 TO 50	
GRADE D - 10 TO 25	
GRADE E - <10	

Note: The Values given in the brackets denote the difference between the Pre and Post Test Scores.
(For Example: If the Pre-Test Grade is 'C' and the Post-Test Grade is 'A', then the progress is +2)

SCHOOL GRADE - CB

Status Gr. C (0) Performance Gr. B (0)

OVERALL PERFORMANCE GRADES

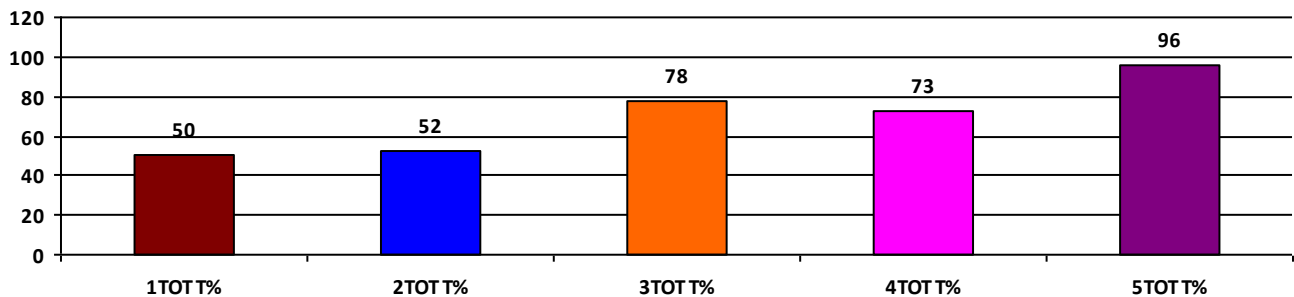
	Boys	Girls	Total
SCHOOL GR.	B	B	B
Diff. to Pre-Test	(0)	(0)	(0)
DIST. GR.	B	B	B
STATE GR.	B	B	B

CLASSWISE APPEARED

DETAILS	I STD	II STD	III STD	IV STD	V STD
BOYS	5	1	6	3	2
GIRLS	1	2	2	4	1
TOTAL	6	3	8	7	3
Diff. to Pre-Test	(0)	(-1)	(+1)	(-1)	(0)

CLASSWISE PERFORMANCE GRADES (% of marks)

DETAILS	I STD	II STD	III STD	IV STD	V STD
%	50	52	78	73	96
SCHOOL GR.	C	B	A	B	A
Diff. to Pre-Test	(0)	(+1)	(+1)	(-1)	(0)
DIST. GR.	A	B	B	B	B
STATE GR.	A	B	B	B	B



GRADEWISE PERFORMANCE (NO. OF STUDENTS)

ENGLISH	1 Std	2 Std	3 Std	4 Std	5 Std	TAMIL	1 Std	2 Std	3 Std	4 Std	5 Std
GR. A	1	0	5	5	3	GR. A	0	1	5	5	3
GR. B	3	1	3	0	0	GR. B	4	1	1	0	0
GR. C	0	2	0	0	0	GR. C	0	0	2	1	0
GR. D	1	0	0	1	0	GR. D	0	1	0	0	0
GR. E	1	0	0	1	0	GR. E	2	0	0	1	0

DEAL POST TEST 2019-20 - SCHOOL REPORT CARD

PONDY
DIS Z1

34020112848 GBPS-MUTHIALPET

All Grades represent the following scorings in % *

GRADE A - >75	* School Status Grade represents the total enrollment of the school (Not %)
GRADE B - 51 TO 75	
GRADE C - 26 TO 50	
GRADE D - 10 TO 25	
GRADE E - <10	

Note: The Values given in the brackets denote the difference between the Pre and Post Test Scores.
(For Example: If the Pre-Test Grade is 'C' and the Post-Test Grade is 'A', then the progress is +2)

SCHOOL GRADE - AB

Status Gr. A (0) Performance Gr. B(+1)

OVERALL PERFORMANCE GRADES

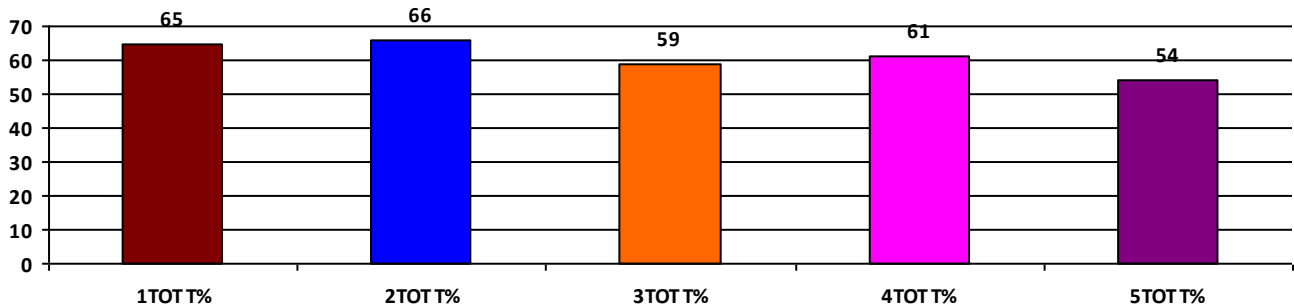
	Boys	Girls	Total
SCHOOL GR.	B	A	B
Diff. to Pre-Test	(+1)	(+1)	(+1)
DIST. GR.	B	B	B
STATE GR.	B	B	B

CLASSWISE APPEARED

DETAILS	I STD	II STD	III STD	IV STD	V STD
BOYS	10	23	25	32	35
GIRLS	21	12	0	0	0
TOTAL	31	35	25	32	35
Diff. to Pre-Test	(-2)	(+3)	(+1)	(+3)	(+3)

CLASSWISE PERFORMANCE GRADES (% of marks)

DETAILS	I STD	II STD	III STD	IV STD	V STD
%	65	66	59	61	54
SCHOOL GR.	B	B	B	B	B
Diff. to Pre-Test	(0)	(+1)	(+1)	(+1)	(+1)
DIST. GR.	A	B	B	B	B
STATE GR.	A	B	B	B	B



GRADEWISE PERFORMANCE (NO. OF STUDENTS)

ENGLISH	1 Std	2 Std	3 Std	4 Std	5 Std	TAMIL	1 Std	2 Std	3 Std	4 Std	5 Std
GR. A	7	13	8	7	8	GR. A	14	21	11	15	13
GR. B	14	9	7	10	9	GR. B	12	6	7	11	10
GR. C	6	8	6	9	6	GR. C	4	4	5	3	6
GR. D	3	5	3	6	11	GR. D	1	1	1	3	5
GR. E	1	0	1	0	1	GR. E	0	3	1	0	1

DEAL POST TEST 2019-20 - SCHOOL REPORT CARD

PONDY
DIS Z1

34020112850 SOUCILABAI GGPS-VISYAL ST

All Grades represent the following scorings in % *

GRADE A - >75	* School Status Grade represents the total enrollment of the school (Not %)
GRADE B - 51 TO 75	
GRADE C - 26 TO 50	
GRADE D - 10 TO 25	
GRADE E - <10	

Note: The Values given in the brackets denote the difference between the Pre and Post Test Scores.
(For Example: If the Pre-Test Grade is 'C' and the Post-Test Grade is 'A', then the progress is +2)

SCHOOL GRADE - BA

Status Gr. B (0) Performance Gr. A(+1)

OVERALL PERFORMANCE GRADES

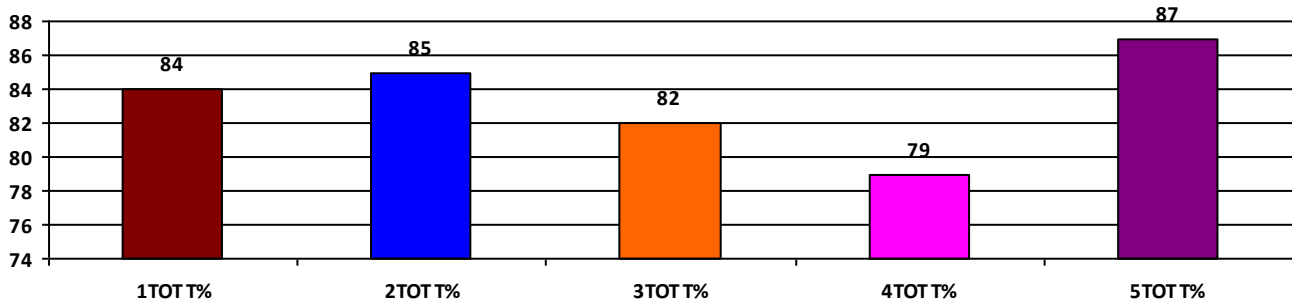
	Boys	Girls	Total
SCHOOL GR.	NA	A	A
Diff. to Pre-Test	(+8)	(+1)	(+1)
DIST. GR.	B	B	B
STATE GR.	B	B	B

CLASSWISE APPEARED

DETAILS	I STD	II STD	III STD	IV STD	V STD
BOYS	0	0	0	0	0
GIRLS	12	12	13	11	19
TOTAL	12	12	13	11	19
Diff. to Pre-Test	(0)	(-1)	(0)	(-1)	(+2)

CLASSWISE PERFORMANCE GRADES (% of marks)

DETAILS	I STD	II STD	III STD	IV STD	V STD
%	84	85	82	79	87
SCHOOL GR.	A	A	A	A	A
Diff. to Pre-Test	(+1)	(+2)	(+1)	(+2)	(+1)
DIST. GR.	A	B	B	B	B
STATE GR.	A	B	B	B	B



GRADEWISE PERFORMANCE (NO. OF STUDENTS)

ENGLISH	1 Std	2 Std	3 Std	4 Std	5 Std	TAMIL	1 Std	2 Std	3 Std	4 Std	5 Std
GR. A	9	9	7	4	16	GR. A	7	11	7	8	18
GR. B	3	2	6	7	3	GR. B	5	1	6	3	1
GR. C	0	1	0	0	0	GR. C	0	0	0	0	0
GR. D	0	0	0	0	0	GR. D	0	0	0	0	0
GR. E	0	0	0	0	0	GR. E	0	0	0	0	0

DEAL POST TEST 2019-20 - SCHOOL REPORT CARD

PONDY
DIS Z1

34020112852 GPS-SITHANKUDISAI

All Grades represent the following scorings in % *

GRADE A - >75	
GRADE B - 51 TO 75	* School Status Grade
GRADE C - 26 TO 50	represents the total
GRADE D - 10 TO 25	enrollment of the
GRADE E - <10	school (Not %)

Note: The Values given in the brackets denote the difference between the Pre and Post Test Scores.
(For Example: If the Pre-Test Grade is 'C' and the Post-Test Grade is 'A', then the progress is +2)

SCHOOL GRADE - BA

Status Gr. B (0) Performance Gr. A(+2)

OVERALL PERFORMANCE GRADES

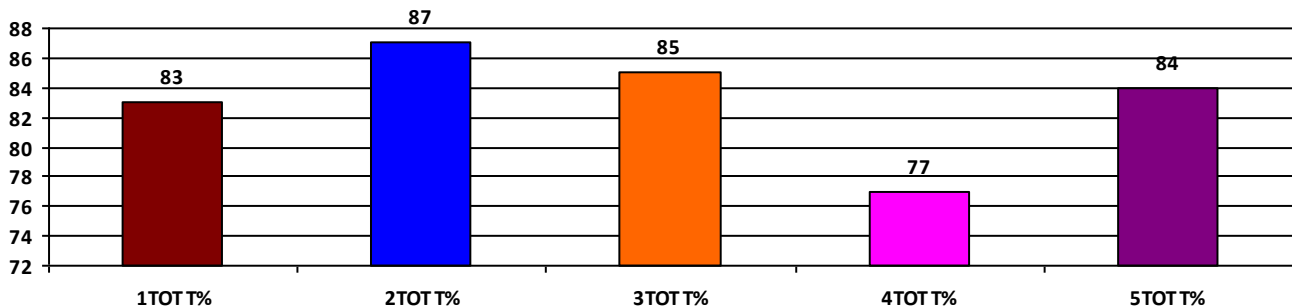
	Boys	Girls	Total
SCHOOL GR.	A	A	A
Diff. to Pre-Test	(+2)	(+2)	(+2)
DIST. GR.	B	B	B
STATE GR.	B	B	B

CLASSWISE APPEARED

DETAILS	I STD	II STD	III STD	IV STD	V STD
BOYS	4	6	7	10	4
GIRLS	1	4	10	6	11
TOTAL	5	10	17	16	15
Diff. to Pre-Test	(+1)	(-1)	(-1)	(0)	(0)

CLASSWISE PERFORMANCE GRADES (% of marks)

DETAILS	I STD	II STD	III STD	IV STD	V STD
%	83	87	85	77	84
SCHOOL GR.	A	A	A	A	A
Diff. to Pre-Test	(+2)	(+3)	(+2)	(+1)	(+2)
DIST. GR.	A	B	B	B	B
STATE GR.	A	B	B	B	B



GRADEWISE PERFORMANCE (NO. OF STUDENTS)

ENGLISH	1 Std	2 Std	3 Std	4 Std	5 Std	TAMIL	1 Std	2 Std	3 Std	4 Std	5 Std
GR. A	5	6	12	10	12	GR. A	4	6	14	9	12
GR. B	0	4	5	4	2	GR. B	1	4	1	6	2
GR. C	0	0	0	1	0	GR. C	0	0	2	1	0
GR. D	0	0	0	1	1	GR. D	0	0	0	0	1
GR. E	0	0	0	0	0	GR. E	0	0	0	0	0